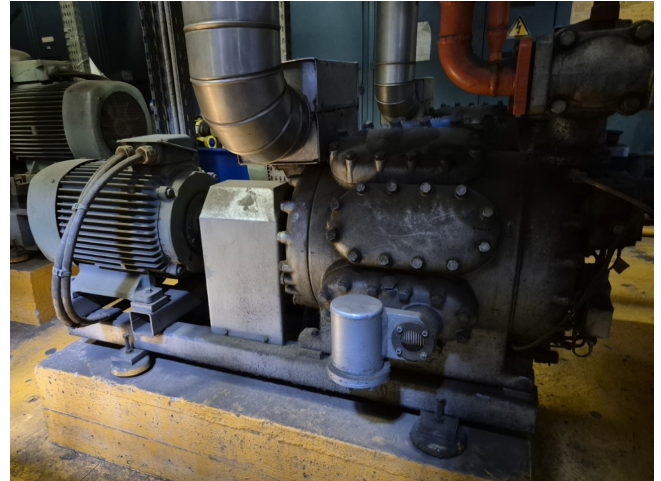


# Sabroe CMO 18

## Specifications

Brand	Sabroe
Type	CMO 18
Refrigerant	Freon
kW at 0°C/+40°C	117,2
kW at -5°C/+40°C	93,9
kW at -10°C/+40°C	73,5
kW at -20°C/+40°C	42,1
Electromotor Specs	50 Hz - 30 kW - 1460 RPM
Capacity Control	✓
On steel base frame	✓
Pressure safety switches	✓
Hp/Lp/Op	
Pressure gauges	✓
Hp/Lp/Op	
Sight Glass	✓
m <sup>3</sup> / h	150
Stock	1



## Description

### Used Sabroe CMO 18

Used Sabroe CMO 18 reciprocating compressor on Freon. Complete with 1 VEB KMER 200 L4 - 50 Hz - 30 kW - 1460 RPM, pressure and safety switches/gauges. The compressor has a displacement of 150 m<sup>3</sup>/h.

\*Why choose for HOSBV? Were not only the largest used refrigeration specialist in Europe, but also, we deliver all equipment including an extensive test, warranty and industrial cleaning.

\*Optional we can also perform a new paint job and arrange the logistics.

